

Danny Straessle
Public Information Officer



NW Arkansas Civil Engineer Society

Tuesday, March 27, 2018



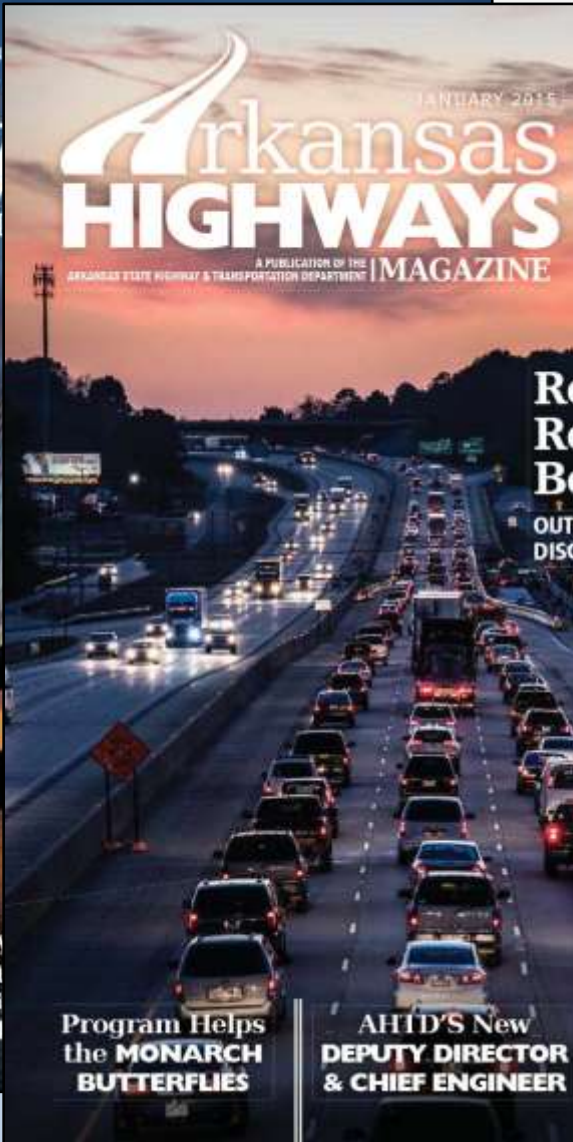
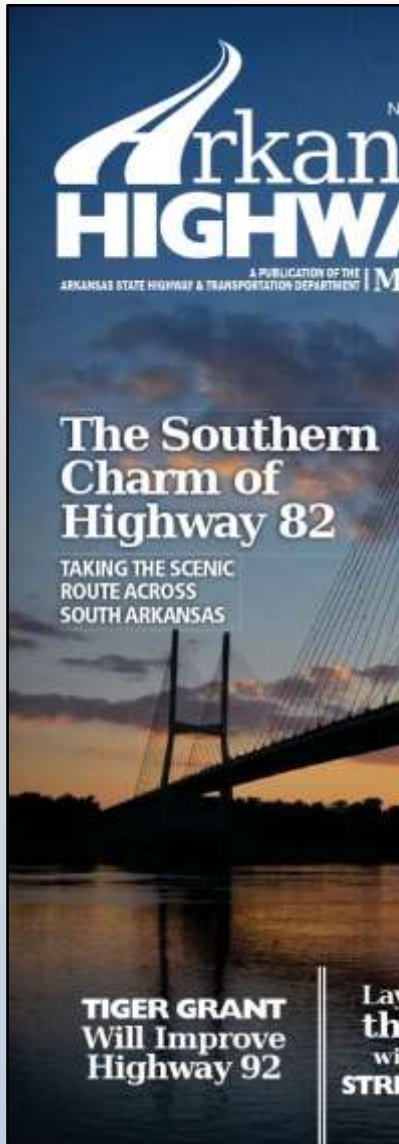
1929
Arkansas
Highway and
Department of
Lands

1977
Arkansas State
Highway and
Transportation
Department

2017
Arkansas
Department of
Transportation



New Name – New Identity





HELPING THE MONARCH BUTTERFLIES:



Butterfly Weed
Asclepias tuberosa
Milkweed Family

THERE ARE CERTAIN TIMES DURING THE SPRING AND THE SUMMER MONTHS WHEN TRAVELERS ON ARKANSAS' HIGHWAYS HAVE NO DOUBT NOTICED BRIGHT AND COLORFUL AREAS OF WILDFLOWERS BLOOMING ALONG THE SIDE OF THE ROAD OR IN THE GRASS MEDIAN. Those flowers may be Purple Coneflowers, Showy Primrose or Black-eyed Susans. They and other varieties are all part of the wildflower mix that makes up the AHTD's wildflower program. The Department's program has helped beautify over 200,000 acres of highway roadsides. The program has helped reduce long-term maintenance costs, enhanced roadside wildlife habitat, provided an attractive roadside environment and preserved native plant populations.

Though not a part of the AHTD's wildflower program, there is a plant that is making headlines across the nation and is now being planted by the Department in a concentrated effort. It's milkweed, and the reason it is being planted is... the Monarch Butterfly.

The Monarch Butterfly population across the globe is declining. Compared to years past, fewer butterflies are crossing the United States as they migrate back and forth to Mexico.



Kayli Ewing, Environmental Analyst I, prepares to plant milkweed seedlings along Interstate 430 in Little Rock.

The AHTD's Milkweed Management Plan

BY DAVID NILES

In 2004, an estimated 550 million Monarchs completed the winter migration, while in 2013 only 33 million arrived. Further, between 2012 and 2013, there was a 43.7 percent decrease in the area occupied by the butterflies in their winter sanctuaries.*

After extensive scientific and environmental research, the major blame for the decline has been put on the loss of habitat. Disappearance of milkweed, a plant vital to Monarchs survival, is among that lost habitat. Milkweed is the only plant that Monarchs will use to lay their eggs on. It is also the primary food source for Monarch caterpillars. Despite its necessity to the species, the plant decreased 21 percent in the United States between 1995 and 2013.

Though deforestation and harsh weather can be partly to blame, the major cause of the disappearance of milkweed in this country is farmers' large scale use of herbicides that destroy the plant.

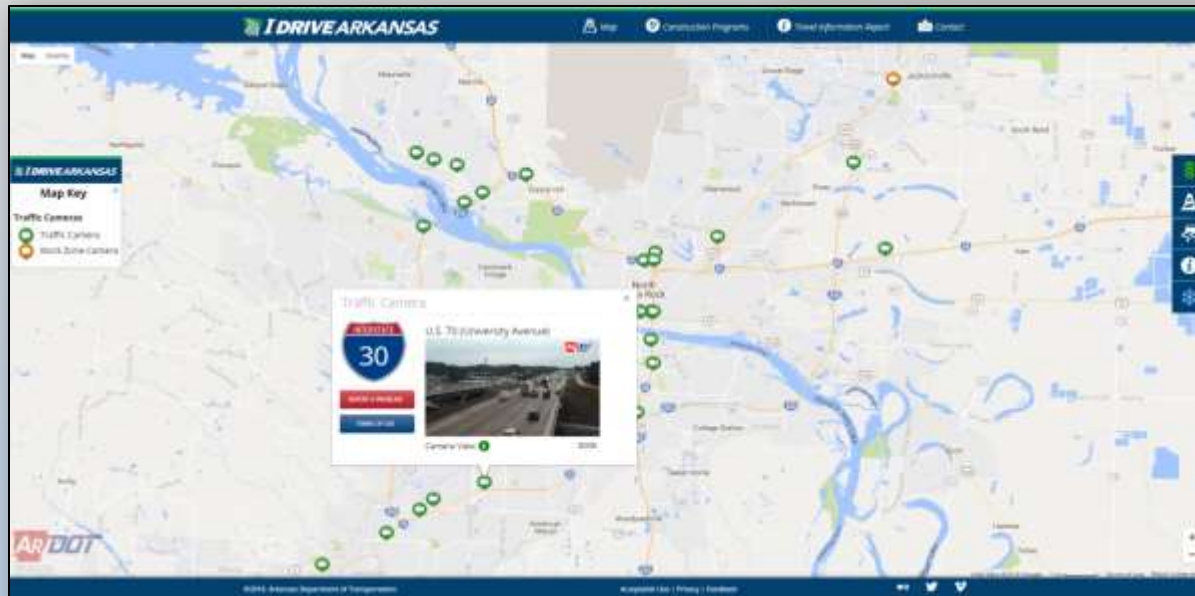
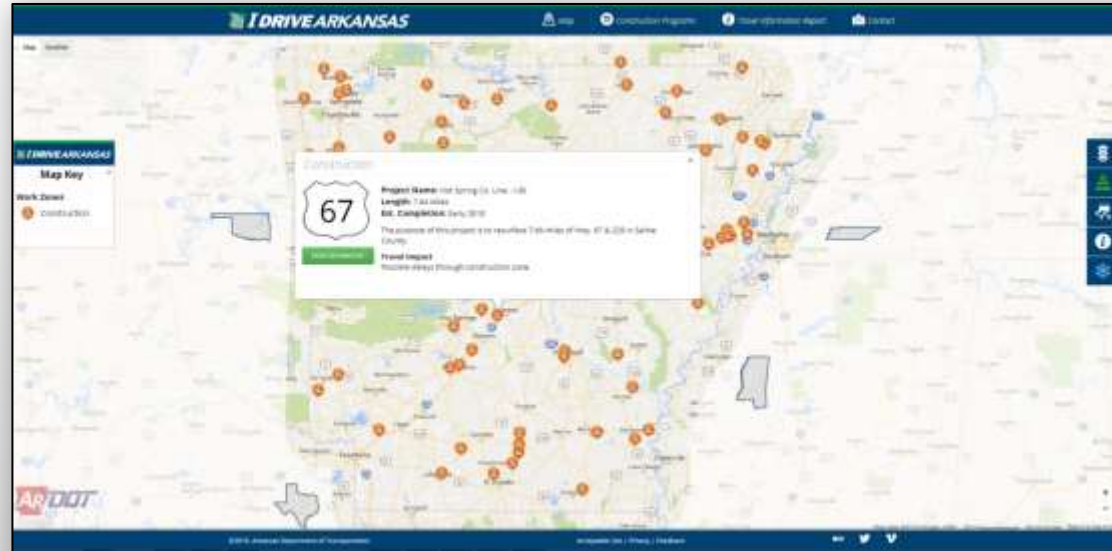
And this is where the AHTD steps in with what is called the Milkweed Management Plan. The plan has been put in place as an independent project due to the growing concerns of the Monarch Butterfly and milkweed populations.

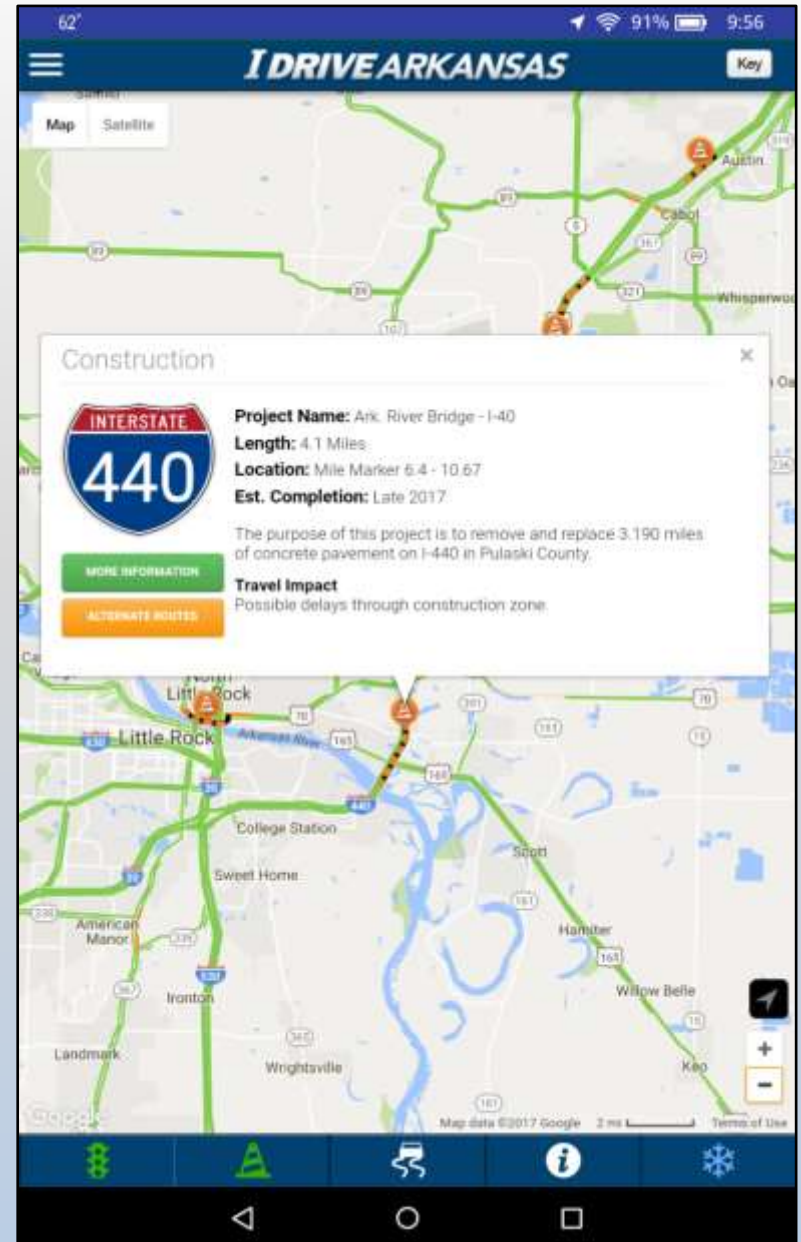
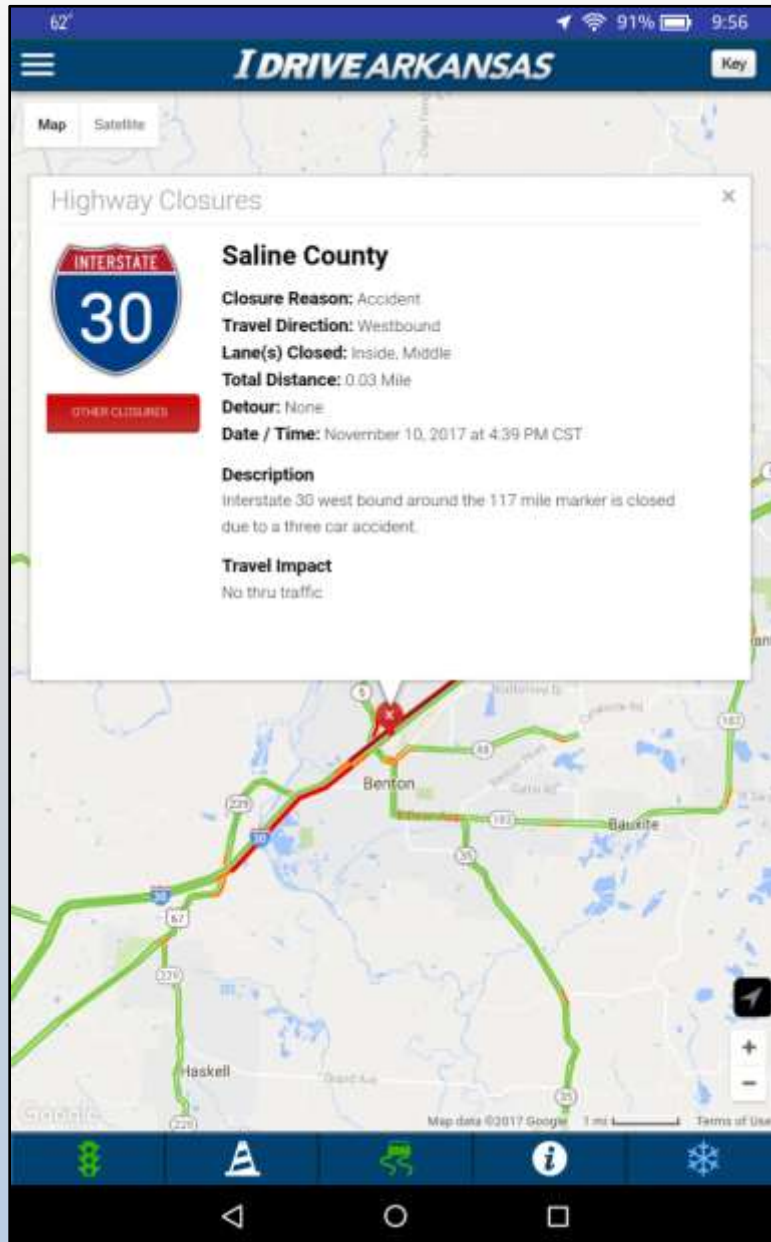
"We were approached by the Botanical Gardens of the Ozarks to see if we could include milkweeds in our wildflower seeding program," comments Kayli Ewing, Environmental Analyst I.

"We haven't included milkweed seed because it is so expensive relative to other native wildflower seed and it has a low germination rate. Also, seed providers never have the amount the Department would need. One is more likely to get milkweed established by transplanting plugs, or one-year-old seedlings. And that is the route we are taking at the AHTD."

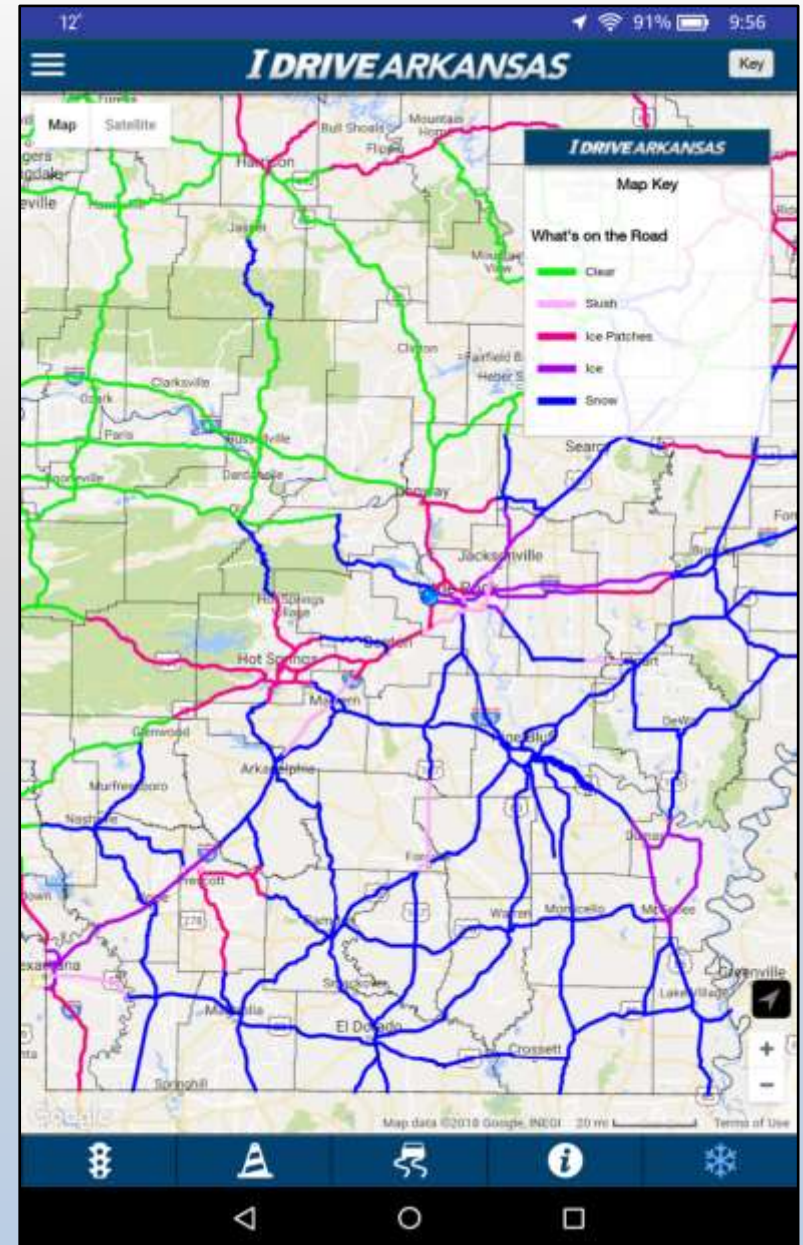
The goal of the AHTD's independent program is to plant a variety of native milkweeds across the State. There are 15 native species.

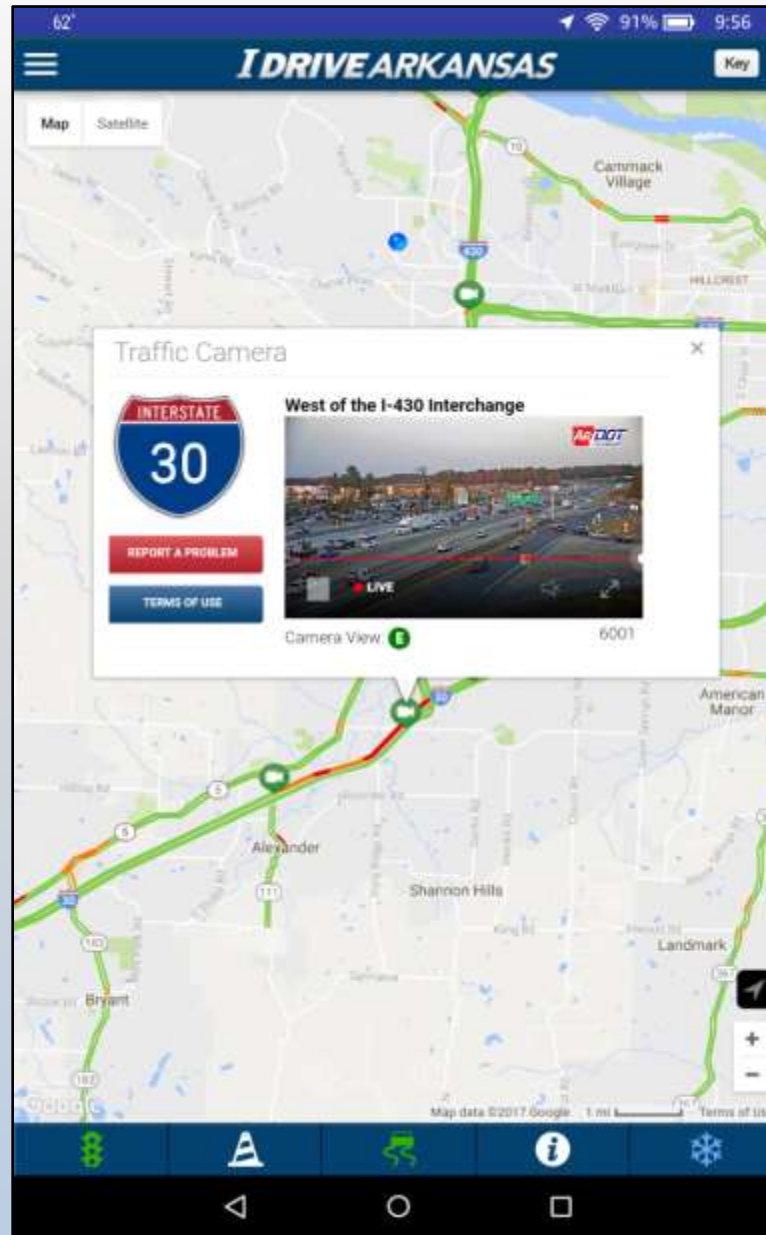
(continued on page 14)















Tweets **16.1K** Following **44** Followers **44.6K** Likes **1,124** Lists **1** Moments **0**

[Edit profile](#)

Arkansas DOT
 @myARDOT
 This account is not monitored 24/7.
 Arkansas Department of Transportation.
 ARDOT reminds users not to tweet or text while driving.

Tweets **Tweets & replies** **Media**

Arkansas DOT @myARDOT · 3h
 Pulaski Cor: A section of U.S. Highway 67 previously closed due to an accident has reopened. #artraffic #CNATraffic

Your Tweet activity

Your Tweets earned **42,392 impressions** over the last 24 hours

Arkansas DOT Human Resources
 @ArkansasDOTJobs
 This account is used for ArDOT job posting information only. Account is not monitored 24/7. For traffic and all other info please follow myARDOT.

Tweets **Tweets & replies** **Media**

Arkansas DOT Human Resources @ArkansasDOTJobs · Mar 16
 Accepting applications through March 29, 2018 for a Maintenance Aide I in our Searcy Area Headquarters. Apply today: arkansashighways.com/Employment/aht...

Who to follow · Refresh · View all

Followed by @eIDOT and others
Zero Fatalities @ZeroFatalities
[Follow](#)

Followed by ADEM and others
Arkansas Counties @75ar...
[Follow](#)

Arkansas DOT @myARDOT

Pulaski Co: Frozen pizza, anyone? No injuries but cleanup will take time. Expect delays #artraffic #arnews

1:11 PM - 9 Aug 2017

200 Retweets 609 Likes

Arkansas DOT @myARDOT - 9 Aug 2017

Pulaski Co I-30 & Mabelvale: Despite the involvement of a few 'Tombstones' we are glad the driver & overpass are okay. #artraffic #arnews

20 140 478

THVRo1ly Hoyt @trollyhoyt

Replying to @myARDOT

"Wheeeennnn aaaa truck is too high and spills these pizza pies, that's a mess-ay" #MozzarellaMess

2:43 PM - 9 Aug 2017

Arkansas Gal @coolbeanscr

Replying to @myARDOT

Now I'm hungry for pizza. Thanks ARDOT!! 🍕 😊

2:01 PM - 9 Aug 2017

2 Likes

Tweet your reply

Arkansas DOT @myARDOT - 9 Aug 2017

Replying to @coolbeanscr

We have to say that Tombstone and Digonio seem to be fairly sturdy brands..

Stylst & Barber Conrad "WI" Levels

Replying to @myARDOT

Is the pavement hot enough to cook them up? 🍕 😂 #YouHadOneJob

2:24 PM - 9 Aug 2017

1 Like

Arkansas DOT @myARDOT - 9 Aug 2017

Replying to @StylstBarberConrad

To be honest, good idea (the good road) but not...

Stylst & Barber Conrad "WI" Levels

Ceele @ceele17894

Replying to @myARDOT

Goes well with the whiskey from last week eh??

1:54 PM - 9 Aug 2017

1 Like

Arkansas DOT @myARDOT - 9 Aug 2017

Replying to @ceele17894

..Do you have a mug pointed in our direction?

Ceele

Cody Graves @codygraves1

Replying to @myARDOT

I'm sure @myARDOT is pretty cheesed off about this. I hope they find the sauce of this predicament and rise to the occasion.

9:42 PM - 8 Aug 2017

1 Like

Arkansas DOT @myARDOT - 9 Aug 2017

Replying to @codygraves1

Arkansas DOT @myARDOT - 9 Aug 2017

Pulaski Co: WB I-30 traffic using outside shoulder to pass cleanup site. EB I-30 all lanes open. #artraffic #ARnews

1 1 5

Gayle Browning @TeamMomScooter

Replying to @myARDOT

"Lots of pizza fatalities"?? ::hysterical laughter:: Thanks, Danny...I needed that. 🍕

3:05 PM - 9 Aug 2017

Pizza Spill



- ARDOT.gov
- ConnectingArkansasProgram.com
- Vimeo.com/myARDOT
- IDriveArkansas.com
- Twitter.com @myARDOT



@myARDOT



Questions?

